

# Embedded Certification Story

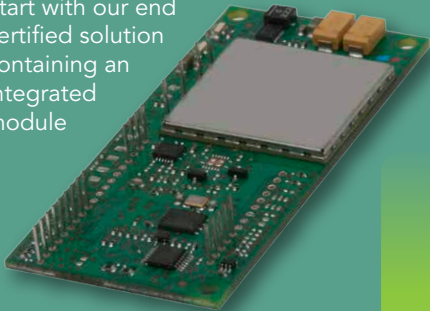
Two possible paths to your product solution...

M2M Simplified  
Save Time. Save Money.

**✓ YES - End Certified**

### MultiTech Embedded Solution

Start with our end certified solution containing an integrated module



We offer a broad portfolio

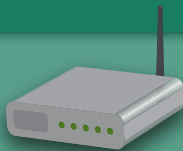
- GSM
- CDMA
- 2G
- 3G
- AT&T
- VERIZON
- SPRINT
- INTERNATIONAL

Future Roadmap (notional)

3G → 4G → 5G

Certification Cost & Time = NONE

**Your Product**

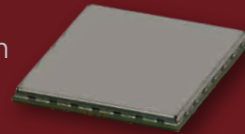


End Certified

M2M Not So Simple  
More cost, time and risk throughout the life-cycle

**✗ NO - Not End Certified**

Start with **Module**



**Regulatory Certification (PTCRB...)**  
1-2 Months  
\$20-40k



**Government Certification (FCC...)**  
1-2 Months  
\$5-23k



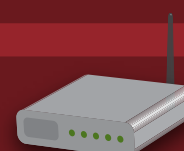
**Carrier Certification**  
2-6 Months  
\$3-24k



NOTE: Repeat ALL COST and TIME for each board revision required

Certification Cost & Time = \$28,000-87,000 / 4-10 Month Schedule

**Your Product**



End Certified

Complex, time consuming and costly life-cycle

Simple Straightforward Life-Cycle Solution

## Future Life-Cycle Events

End-of-Life Module

Technology Migration

Customer Product Change

Add Additional Network

# Total Cost of Ownership

## Your comprehensive requirements checklist to design in a standalone module

### Develop Cellular Expertise:

- ✓ Complex and fragmented market
- ✓ Difficult RF designs considerations.
- ✓ Time and cost to build expertise.

### Hardware Design:

- ✓ Custom design for all module and product variation, including supporting components.

### Certifications:

- ✓ Lengthy and risky certification process, potentially resulting in millions of dollars in lost opportunity costs.

### Non-Recurring Engineering Expense:

- ✓ Large upfront investment, before product has been validated in the market.

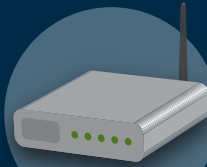
### Lifecycle Management:

- ✓ Manage module EOL issues, module firmware updates, recertifications as you modify your hardware design, etc...

**Complicated**

## Your Product

End Certified



Your Choice

## Your checklist with MultiTech

Leverage our years of experience in embedded communications products and world class portfolio of drop-in embedded solutions.

**Easy**

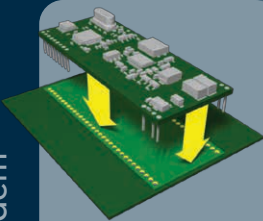


**M2M Simplified.™**  
Innovative Designs,  
Innovative Solutions.

## Flexible Form Factors

Wide variety of embedded form factors to meet ANY of your needs.

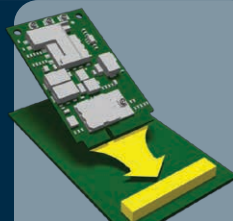
SocketModem®



### Universal Socket Footprint

Largest portfolio of connectivity options

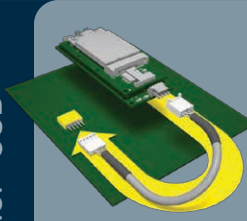
MultiConnect™ PCIe



### PCI Express Mini Card

Small form factor, industry standard

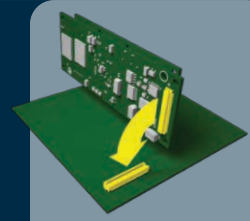
QuickCarrier™ USB



### 4 Pin USB Header

Plug and Play integration through standard connector

MultiConnect™ OCG-E



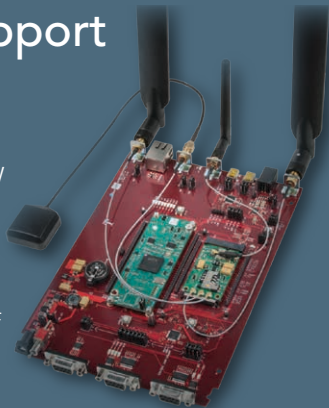
### 80 Pin B2B Connector

System On Module (SOM) with Linux to host your application

## Developer Support

Committed to helping you succeed!

- Developer Tools – HW and SW
- Extensive Documentation
- Developer Support Sites  
[www.multitech.net](http://www.multitech.net)  
[support.multitech.com](http://support.multitech.com)
- Industry Leading Support Staff  
- 15 years average tenure
- Design Services



## Support Information

These services are aimed at installation support, protecting your investment, extending the life of your product, and reducing the total cost of ownership

- 1-to-1 telephone-based priority installation support
- Post-installation troubleshooting
- Configuration assistance
- Customized OEM Program

Products include a two year warranty



800-328-9717 • [sales@multitech.com](mailto:sales@multitech.com)  
[www.multitech.com](http://www.multitech.com)